

**WELCOME
TO SECURITY**

**VULNERABILITY
IS OVER**



IRIS - NETWORK TRAFFIC ANALYZER

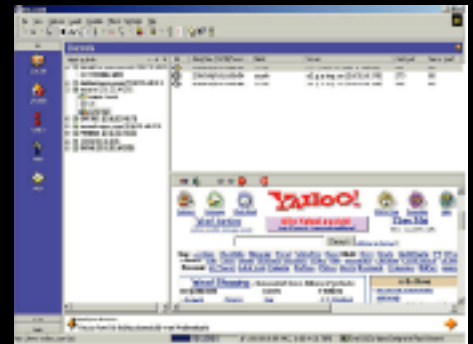
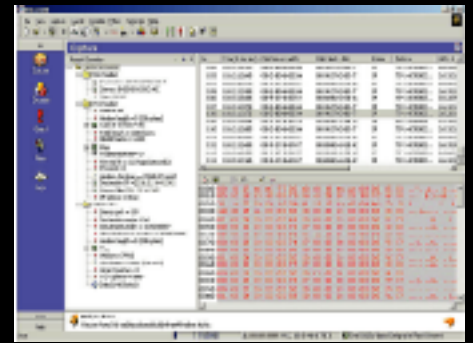
eEye Digital Security announces Iris, a revolutionary network “sniffer” that shows what is passing through your network pipes with a simple push of a button. Iris is the first network traffic analyzer on the market, ingeniously designed to help IT personnel proactively monitor their organization's network.

Unlike other network sniffers, Iris has advanced, integrated technology that allows it to reconstruct network traffic in a format that is simple to use and understand.

IRIS

With a push of a button, an administrator can "sniff" detailed information concerning the activities of its network users.

Unlike other network sniffers, Iris has advanced, integrated technology that allows it to reconstruct network traffic in a format that is simple to use and understand.



IRIS Features

With Iris, network protocol analyzing has reached new levels of ease and sophistication. Employing advanced proprietary features, Iris will paint a concise picture of the integrity of an organizations network in a simple and efficient manner. Contained within a simple graphical user interface, Iris utilizes and integrates the following advanced features and functionalities:

- Packet reconstruction
- Packet manipulation/forging
- Filter by Hardware Layer
- Filter by Protocol Layer
- Filter by key words
- Filter by MAC address
- Filter by IP address
- Filter by Port
- Log network-wide foreign connection attempts
- Reconstruction of common protocols
- Log "sniffed" packets
- Log reconstructed packets

If an attacker plots an intrusion against an organizations network, in most situations the firewall will inform the network administrator. However, the evidence of such an attack is incomplete and difficult to decipher. Iris will capture the evidence of network intrusions, literally reconstructing every keystroke and movement. Dissecting that critical information with Iris is easy, saving IT personnel valuable time.

Network Protocol Analyzing

Network protocol analyzing or "sniffing" is the process of monitoring both incoming and outgoing traffic on an organization's network by capturing and retracing the steps of any network user. By reconstructing every keystroke, Iris thoroughly examines the critical information in order to obtain a precise picture of the activity occurring on a network. With the rise of damaging activity ever increasing in the information technology sphere, having access to this information has become paramount.

System Requirements

- Windows 95/98/NT/2000
- Internet Explorer 4.01 or higher
- comctl32.dll version 5.00 or higher

Minimum system
Pentium 166, 32MB RAM, 1GB HDD

Recommended
Pentium 400, 128MB, 10 GB HDD